

## FlexFix-V Series Vision Measuring System Fixtures

The FlexFix-V series VMM fixtures offer unique fixturing solution for clamping various components measuring on the vision measurement machines.

The base boards are using acrylic material that allows for the use of contour light to observe the edge. The precise acrylic material ensures the accuracy of the contour light path way, to get vertical optical path and image.

### Fixture components

The FlexFix-V series VMM fixtures components are easily adjustable and assembling, no need for any extra tools for installing. Also the kits components are designed to hold components firmly with the minimum necessary force to avoid damage or distortion. Ensures the flexibility when setting up a fixture, offers a maximum clearance for inspection.

### Vision fixture kits

The FlexFix-V series vision fixtures can be purchased in complete kits or components separately. Flexible options satisfy most circumstances of vision measuring application.

For more information please local dealers.

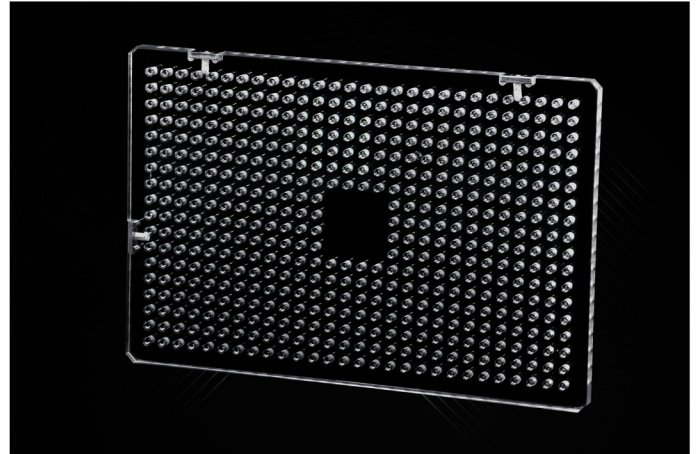
## Base plates

There are two options for the base plates:

Multi-holes: offers greater flexibility to set up and check as many parts as possible at one time with a clear area in the centre of the plate.

Multi-window: many windows for the clearest view of small parts.

Also Multiple size of the base plates are for option, for more information please contact our service staffs.



## Fixture components

All the fixturing components are using high quality aluminum material and hard anodized surface process, which is anti-scratch and reliable.

Each component has number laser print on the surface, which makes the fixturing system easily programmable.



## Wider application

The low clamping force and easy operation of the FlexFix-V series VMM fixture system allows users to use it with different parts of varies materials. For steel, aluminum and even plastic material can be tightly clamped on the system without deformation.

The numbering system allows programming, even different operator measuring the parts they can get the measuring result with the same fixturing standard.

